

CRIMP AND CREATE

Using the loom controlled shibori technique permanently crimped fabric can be created using a heat-set process. In addition to the warp and weft used for the ground cloth, a second set of threads is used either in the warp or the weft for the purpose of creating a 3-dimensional fabric. These additional threads, referred to as pattern, are not a part of the structure of the fabric. After they have served their purpose of creating a pleasing crimp pattern, they are removed.

Choose *either* a **warp** or a **weft** crimp threading for the workshop. The initial intent is for each participant to weave as many different combinations of “crimpable” pattern on one warp as possible. Although this is not set up as a round-robin workshop, if you exhaust the possibilities on your warp, swapping looms to weave a sample of a different threading will give you the opportunity to experience both.

Whether you choose warp crimp or weft crimp, you will need synthetic (thermoplastic, such as polyester or Orlon (acrylic) – rayon and Tencel are not thermoplastic) yarn. The remainder of the yarn can come from your stash. The tie-up will be explained at the beginning of the workshop.

WARP CRIMP – a one-shuttle weave structure

Warp: **ground cloth**: any synthetic yarn – 8/2 or finer (10/2, 16/2, 20/2, etc.). The warp has to be 100% synthetic or a combination yarn with a majority being synthetic.

Pull thread (supplemental): any strong, smooth yarn. (Bonded nylon or upholstery thread are good choices - no fishing line or monofilament). Contrasting color to the ground cloth is best - allows you to see the pattern being created by the insertion of the pull threads. The size doesn't make a difference other than the size of holes it leaves behind after its removal from the finished cloth.

Warp Length: 6 yd. warp (4 yd. warp for 2 day)

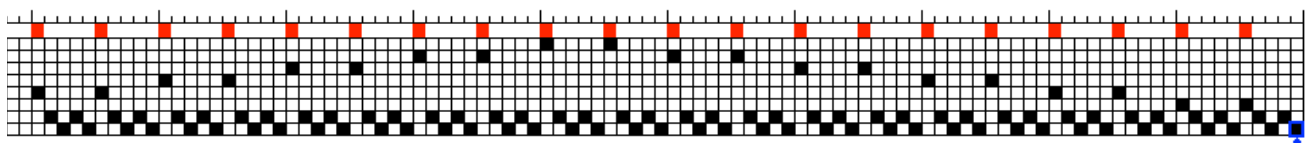
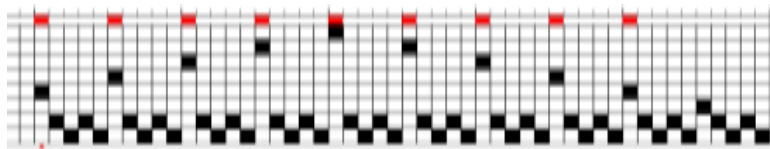
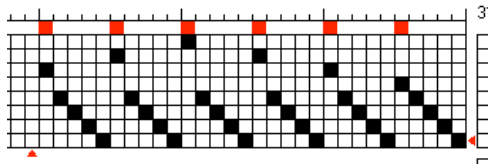
Warp Width: minimum 10” in reed (can be less if your loom is narrower than 10”)

Sett: A sett that works for twill and/or plain weave. A sett of 20 epi is good for 8/2 yarn.

Winding the warp: Wind a warp using your favorite method. Include the pull threads at the same time as winding the synthetic yarn. The pull threads are supplemental and will eventually be removed, so **do not** include them in your calculations for an appropriate sett. A pull thread will be threaded after every 4 ends of synthetic, or depending on your sett, about every ¼” of warp, and sleyed as a supplementary warp. Note: The pull threads can be wound and beamed separately if a second beam is available. For ease of warping, it works best if you can keep the warp under tension when transferring it from the warping board to your loom. A niddy-noddy can be used.

Threading for 8S: You may follow one of the threadings below, or you can vary the threading of the pattern shafts (indicated with red squares in the color bar) in any order of your choosing. For example, you can use combinations of straight and point twill, advancing, network, etc. Don't be concerned if you end up with an incomplete repeat of pattern across the width. Remember that these “pull threads” do not create cloth. If you are using finer threads for the ground cloth, you will reposition the pull threads to be spaced about 1/4” apart; for example, 8 ground warp ends between pull threads. *If you have more than 8 shafts, contact me for more options.

Note: The red squares on the drafts below are in my computer program color bar. They **do not** represent ends to be threaded, but are for the purpose of drawing attention to the black squares in those columns that are to be threaded as the pull threads.



Threading for 4S: Although warp crimp can be done on 4S, I suggest, if you do not have more than 4 shafts to use, to thread for weft shibori as it provides more opportunity for exploration in a workshop setting.

WEFT CRIMP – a two-shuttle weave structure

Warp: yarn size - 8/2, 10/2 or finer; fiber content – whatever is in your stash. (The synthetic yarn will be used in the weft.)

Warp length: 4 yards

Warp width: minimum of 16” in the reed (if your loom is narrower than 16”, thread as wide as the loom permits.)

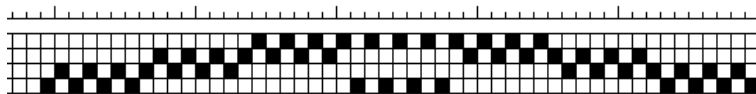
Sett: A sett that works for both twill and plain weave for your ground cloth. (8/2 can be sett at 20 epi.)

Threading for 4S: Block weaves work very well such as Spot Bronson, Lace, Overshot, Monk’s Belt, Summer and Winter, Crackle, M’s & O’s, etc. You will not be weaving them as traditional overshot, Monk’s Belt, etc., but just using the threading. The units in the blocks can be repeated as many or as few times as desired to affect the length of the blocks. However, variations less than 1” in block width are suggested. A point twill, extended point twill, or any twill variation can also be used. Do not use a straight draw twill threading as it is very limited in design possibilities.

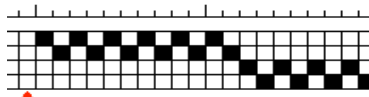
Summer and Winter:



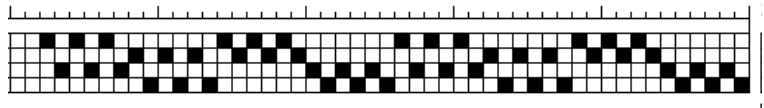
Overshot:



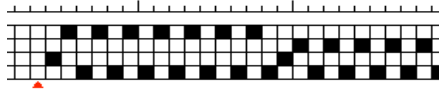
Monk's Belt



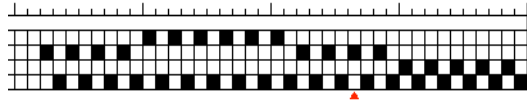
M's & O's



Bronson Lace:



Spot Bronson:



Threading for *more than 4S*: Use any of the above block weaves, extending them to use all shafts; or use a twill threading such as point twill, combinations of straight and point twill, advancing twill, network, etc.

Basically:

THREAD YOUR LOOM TO YOUR FAVORITE WEAVE STRUCTURE, USING AS MANY SHAFTS AS YOU HAVE AVAILABLE. (Do not over-think this. I will show you how to make work whatever structure you choose.)

SUPPLY LIST

Weft yarn: For **warp** crimp: a variety of fibers and colors in sizes 8/2 and finer. Here's a chance to use from your stash.

For **weft** crimp: synthetic yarn. An alternative to synthetic yarn: fine natural fibers can be used if plied with polyester sewing thread. Don't be concerned if the poly thread doesn't match your natural fibers as long as the color combination is pleasing. If you have chosen weft crimp, you will also need **Pattern yarn** for weft: any strong, smooth yarn. (Bonded nylon or upholstery thread are good choices.) Contrasting color to the ground cloth is best. The size doesn't make a difference other than the size of holes it leaves behind after its removal from the finished cloth.

Yarn choices will be covered in the pre-class instructions.

2 Shuttles

Several bobbins

Usual items needed to repair a broken warp

Heddle hook

Scissors (small with a good snipping point, if you have one)

A bobbin winder (we'll need a few for the workshop, bring your own if you wish)

Straight pins, safety pins

Tape measure

2 dowels or narrow flat sticks at least 2" longer than the warp width in the reed, but narrow enough to wind onto your cloth beam. Bring an extra dowel or stick if you are doing warp crimp. Sticks need to be strong enough to hold the tension of the warp

Fray Check (can be found at WalMart or Fabric Stores)

Masking tape or blue painters' tape can come in handy

Note-taking materials

A few Band-aids (for protection when gathering pull threads)

SOURCE LIST for synthetics

Yarn Circle

8/2 Polyester in stock
Brasstown, NC

www.yarncircle.com 1-828-835-4592

Yarn Barn of Kansas

8/2 Orlon in 50+ colors
8/2 polyester in 23 colors, available but not in stock

www.yarnbarn-ks.com 1-800-468-0035

R & M Yarns

Mill Ends – sometimes available, price makes it worth checking
12/2 polyester

www.rmyarns.com 1-800-343-9276

The Thread Exchange

Weaverville, NC 28787

Size 69 bonded nylon or polyester (not for ground cloth), good for the pull threads.

Check out their bargains/closeouts.

www.thethreadexchange.com 1-800-915-2320

Eugene Textile Center

8/2 orlon and polyester in stock
1510 Jacobs Drive

Eugene Oregon 97402

541-688-1565 Shop 541-913-9512 Cell www.eugenetextilecenter.com

www.mbrassard.com

www.superiorthreads.com ProLock or Tailor Made

www.ylicorp.com Jeans Stitch

www.wawak.com Click on thread, Coats and Clark Trilobal polyester, 40 wt., plus others

CREDITS

Totten, Dianne: *Handwoven*, “Parrot Plumage Crimped Scarf” May/June, 2015 p. 28-30

Totten, Dianne: *Complex Weavers Journal*, “Crimp Cloth” February, 2014 p. 28-29

Totten, Dianne: *Handwoven*, “Twill for Shape and Drape” “Get My Angle” Nov./Dec., 2013, p. 62

Totten, Dianne: *Complex Weavers Journal*, “Transitions” February, 2013 p. 15

Totten, Dianne: *Handwoven*, “Night at the Opera” September/October, 2011

Totten, Dianne: *Complex Weavers Journal*, “Blue Jay” February, 2011 p. 15

Totten, Dianne: *Handwoven*, “Sandstone Layers” Fabric Forecast, March/April 2007 p. 80

Ellis, Catherine; *Woven Shibori*, Interweave Press, 2005

Faulkner, Kay; Magazine articles including, *Weavers*, Issue 40, p. 34: Issue 43, p.66

Dianne Totten 770-971-8713 DTottenHW@comcast.net